

Welcome

Email. It's become an important part of life. You use it to communicate with friends and loved ones. You use it to do business with people around the world. Both adults and children use it to quickly exchange thoughts and ideas with their peers. And, unfortunately, some people use it to bombard you with "SPAM." SPAM is the techie word for "junk" or "unsolicited email" and it's flooding the Internet and *your* inbox! If you want to take steps to drastically reduce the amount of SPAM you receive, take a look at SPAM CRUSHER!

Spam Crusher is designed to filter unwanted email, while allowing the email you want to receive. Spam Crusher can be configured to filter multiple email accounts. If your email program is Netscape, Outlook, Outlook Express, Eudora, Incredimail Xe, or PegasusMail, Spam Crusher will automatically detect your email account settings and start working! And, if you're using another email program that's not listed, Spam Crusher is really easy to set up. In just a few minutes you can be up and running.

Spam Crusher currently does not support AOL, Hotmail or Juno.

Click the following to see

[Spam Crusher's features](#)

[How Spam Crusher works](#)

[Running Spam Crusher for the first time](#)

If you need help on a specific topic, click it:

[Spam that I have received - Trash Can](#)

[Good email that I have received - Inbox](#)

[Friends List - People you always want email from](#)

[Filters - How Spam Crusher looks for spam](#)

[Sounds](#)

[Preferences](#)

[Change my password](#)

[Import my address book](#)

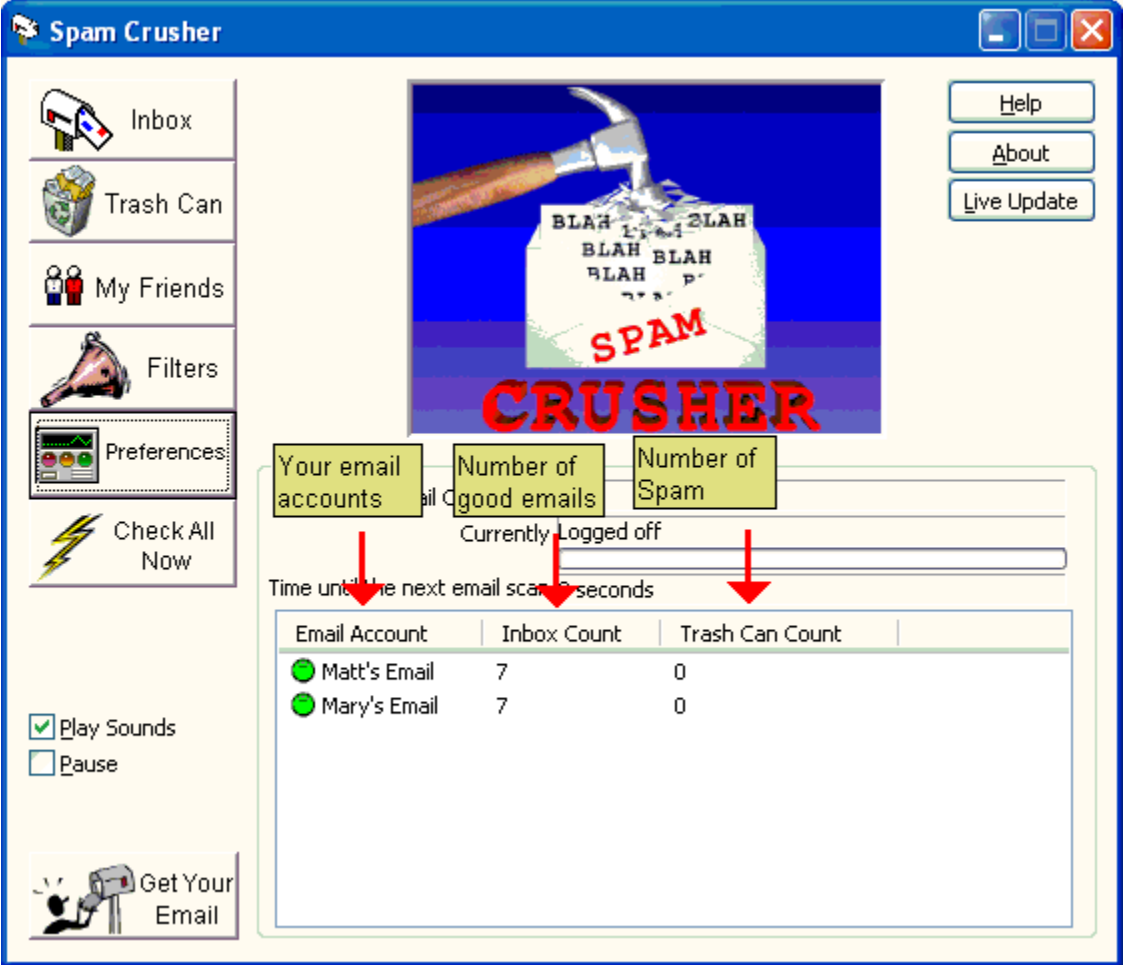
[Change my email server settings](#)

[Change my default email program](#)

[Live Update](#)

[Contact Us](#)

[Order Form](#)



Running Spam Crusher for the first time

When you run Spam Crusher for the first time, the program will scan your computer to see if you have the following programs on your PC.

Netscape

Outlook

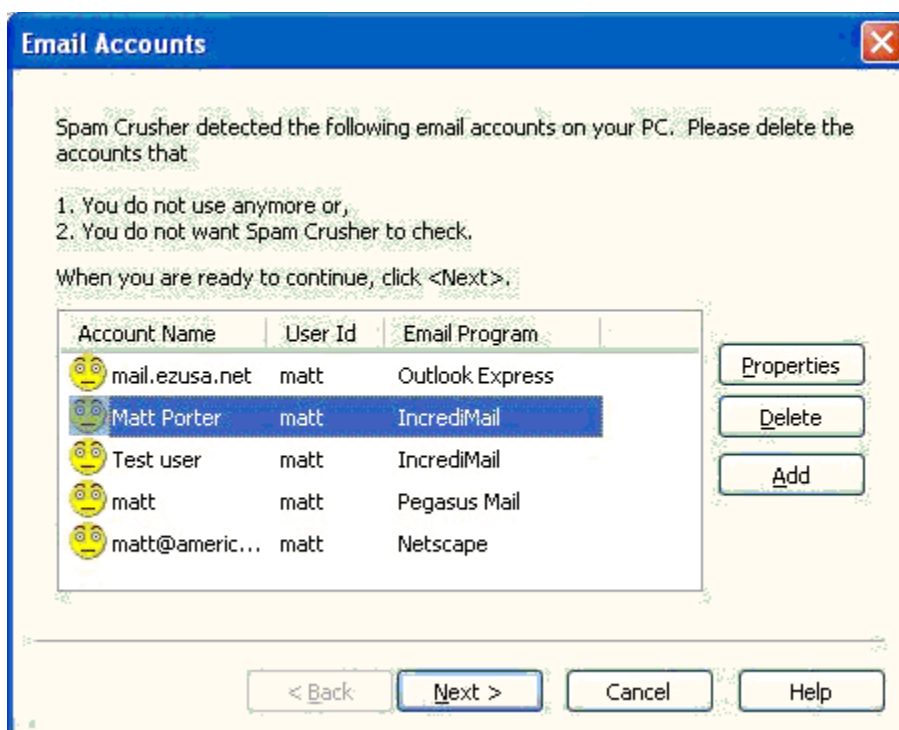
Outlook Express

Eudora

Incredimail Xe

PegasusMail

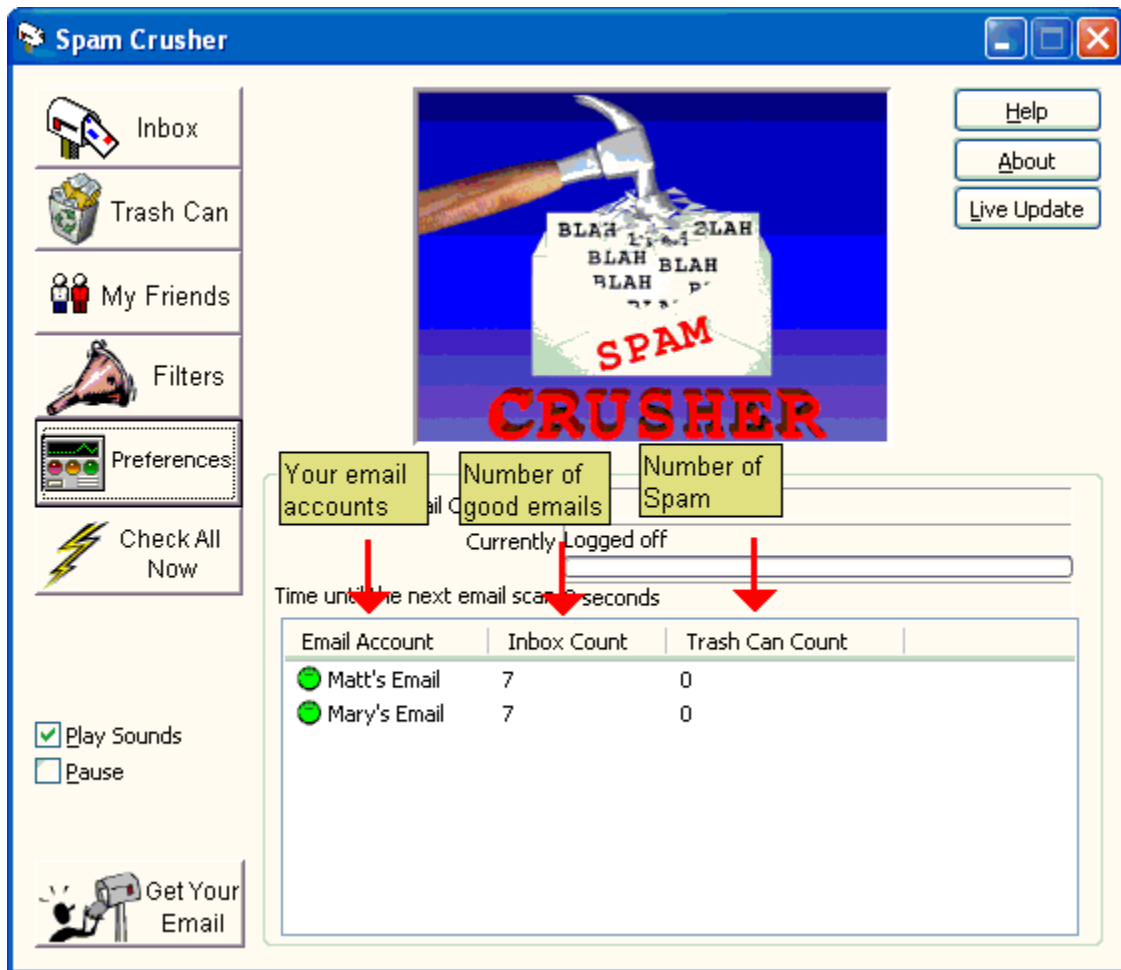
These are the most common Email programs on the market today. Spam Crusher will search to see if you have email accounts setup in any of these programs. If you do, you will see the following window.



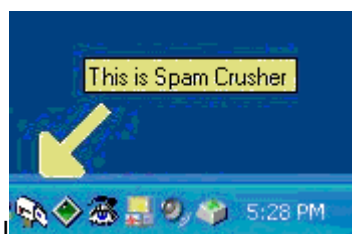
If you have more than one account listed, be sure that you still use them all. Delete the ones that you don't use anymore. Then click <Next>.

The next window has a <Connect Now> button. Spam Crusher will attempt to connect to each email account and make sure that all of the information it collected is accurate. Spam Crusher may ask you for your email password. This is necessary for Spam Crusher to read and scan your mail for spam. Please do not be alarmed by this.

Once Spam Crusher successfully connects to your email account(s) it will automatically begin scanning for spam. You will see this window.



Now just click the 'X' at the top right, and you'll see a mailbox icon in your tray (by your clock.) If you see this mailbox, you'll know that Spam Crusher is running and scanning for spam.



How does Spam Crusher work?

Spam Crusher works best for you when it is always running. Spam Crusher will run when you start your PC unless you disable the option in <Preferences>.

We recommend that you do not leave your email program up constantly. Spam Crusher will notify you with a happy sound when you get good mail. Spam Crusher will also notify you with a buzzer sound when you get a spam.

Periodically Spam Crusher will login to your email account(s) and see what email you have on the server waiting for you. If it finds any new mail it will scan them. If it finds spam, it will remove it from your email account and store it in the Spam Crusher Trash Can.

You can see your spam's by clicking the <Trash Can> button. You can also see what good mail is waiting for you by clicking the <Inbox> button. When you are ready to start sending email, click the <Get Your Email> button.

Spam Crusher is not a replacement for your email program. It is a compliment to your current email program.

Spam that I have received - (Trash Can)

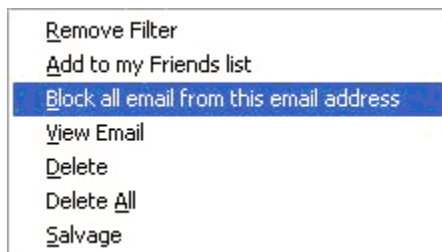
If you click the <Trash Can> button on the main window you'll see all the email that Spam Crusher has blocked. When you decide you are ready to do something with all the spam that Spam Crusher filtered, you have several choices.

1. Let Spam Crusher automatically delete your spam when it gets old. Just check the "Automatically Delete Old Spam" option.
2. You can View your spam. Just double click it or selected the spam and click the <View Email> button.
3. You can delete the email yourself by clicking the <Delete> button or <Delete All>. Delete All will delete all the spam at once.
4. Sometimes you may find that an email that you really wanted gets filtered. You can send it back to your inbox by clicking the <Salvage Email> button.
5. You can "Bounce" a spam. This sends an email back to the sender, and makes them think that your email address no longer exists. Normally the sender has a computer program that will automatically delete "bounced" email addresses from their list. And they won't send you anything else.
6. Finally, if there is a spam that was sent by a friend and you really wanted it, **right click on it**. You'll see a menu with these options:

Remove Filter - Let's say that you receive an email with the word 'offer' in it. And you would like to receive emails with the word 'offer' in it. Just click <Remove Filter>, and the word 'offer' will no longer be in the filter list and you will be able to receive emails with the word 'offer' in them.

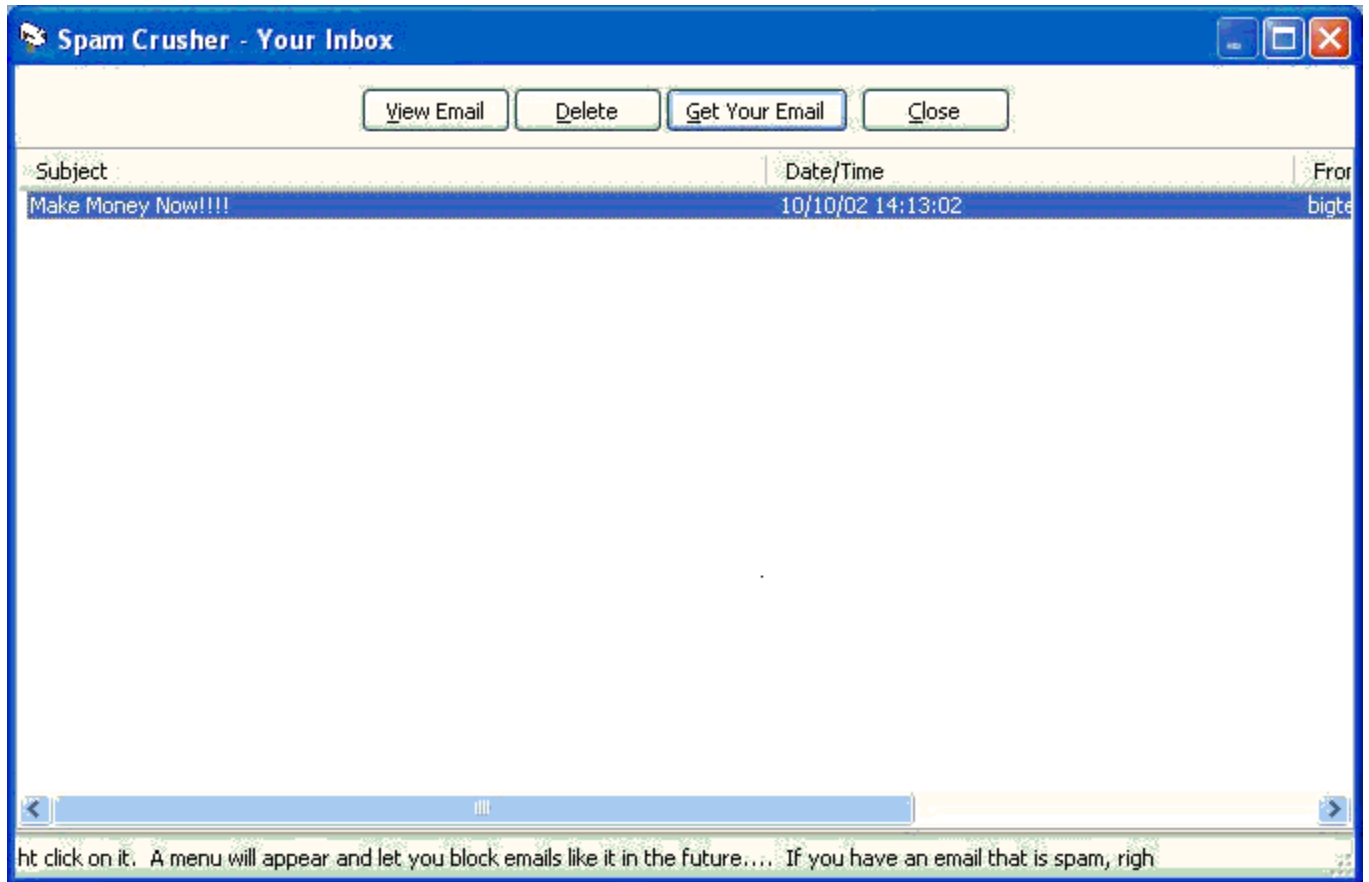
Add to my Friends list - Let's say that you receive an email from a friend and it gets filtered. Just click <Add to my Friends list> and from now on ALL email that person sends you will not get filtered.

Block all email from this email address - If you get a spam and you know that the person that sent it is a spammer - just click <Block all email from this email address> and from now on, all email this person sends you will get filtered.



Good email that I have received (Inbox)

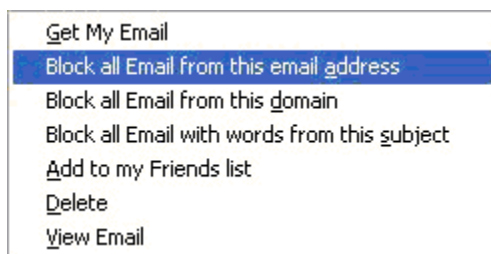
Email that is waiting for you is in your <Inbox>. Just click the <Inbox> button and you'll see the following screen,



You can click <View Email> to view an individual email, or click <Get My Email> to go to your email program and retrieve your email.

You can click <Delete> and it will delete your email from your email account. Sometimes you may see an email here that you already know that you just want to delete. This saves you from having to go to your email program, get your email and delete it.

If you see an email listed here that is in fact spam, right click on it. The following menu will appear.



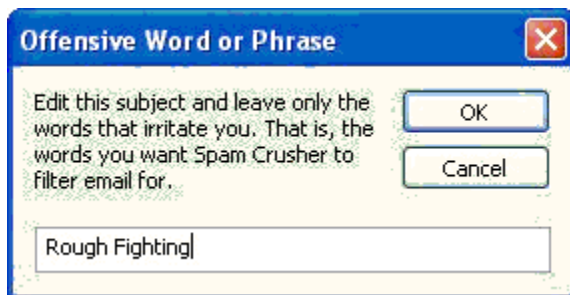
Block all Email from this email address - Many times you'll notice that the same email address will send you unwanted email over and over again. Select this option and any email from this email address will get filtered in the future.

Block all Email from this domain - Sometimes you'll notice that the same domain will send you unwanted email over and over again using different email addresses. For example, you could get 3 emails from the same person with different email addresses:

Buyme123@link2buy.com
ThisIsCool@link2buy.com
AsSeenOnTV@link2buy.com

Select this option and any email from this domain will get filtered in the future. In the example, all email from link2buy.com would be filtered.

Block all Email with words from this subject - Let's say that you have an email in your Inbox that you know is spam because of a word or two in the subject. Click this option and the following window will appear.



Delete the words you are not offended by and keep the words you are. Then click <Ok>. Those words you selected (for example "Rough Fighting") will cause Spam Crusher to filter email containing those words in the subject or body in the future.

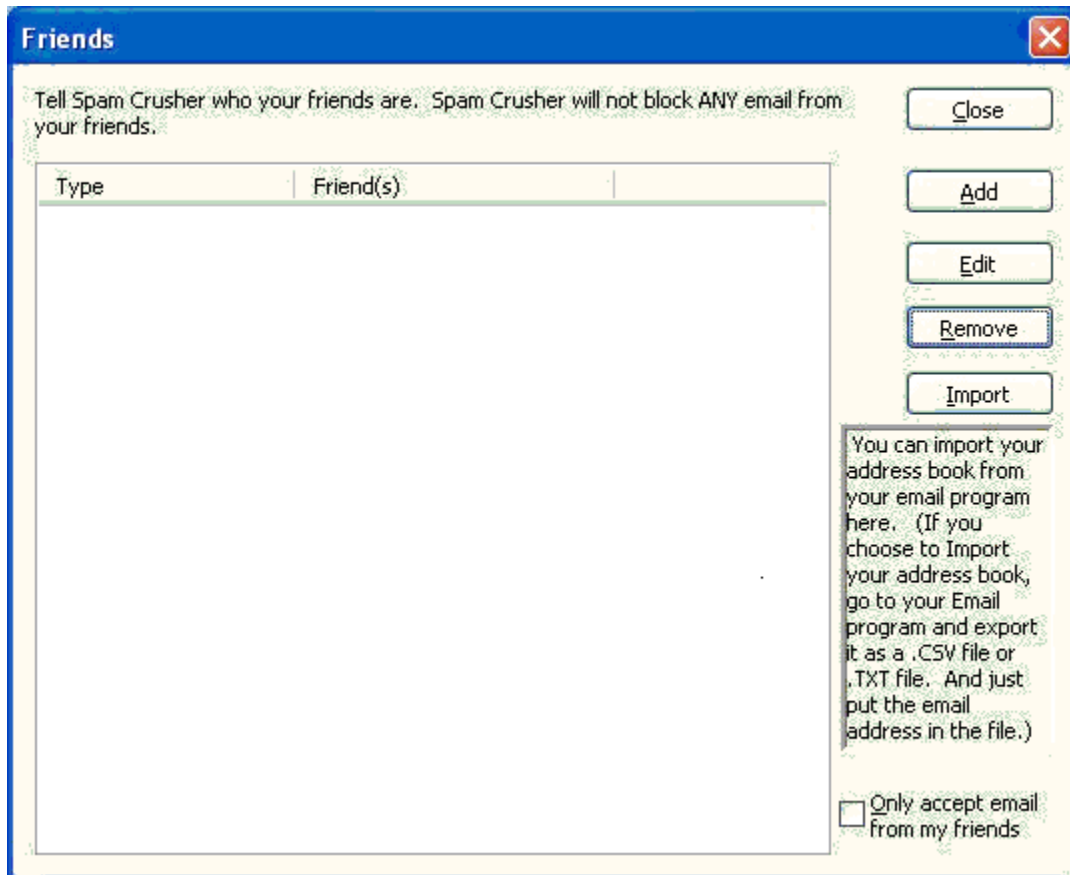
Add to my Friends list - If you see an email that is from a friend right click on it and you can add him/her to your Friends list. All email from "Friends" will not be filtered regardless of the content.

Friends List

Your Friends List is the list of email addresses that you always want. Email from these people will never ever get filtered, regardless of it's content.

You can add people or domains to your Friends list in several ways.

1. Click the <My Friends> button on the main window. The following window will appear.



You can click <Add> or <Import>. <Add> will let you add one email address or one domain to the list. If you add a domain, then all email from that domain will be accepted and not filtered. For example, if you add americansys.com to the list, all email from americansys.com will be accepted.

<Import> will allow you to import your address book from your email program.

2. In the <Inbox> you can right click on one or more emails and select <Add to my Friends list>.

3. In the <Trash Can> you can right click on one or more emails and select <Add to my Friends list>.

Import My Address Book

This is a very handy way to add all of your friends at once to your Friends list. But you have to be familiar with Importing and Exporting data.

Warning: If you are not comfortable importing and exporting data, I would not worry about this feature. It can get tricky if you don't know what you are doing.

Go to your Address book and export ONLY your email address to a comma delimited file or CSV file.

Every email program is different. **If you use Outlook Express** here are instructions for exporting your address book and importing into Spam Crusher's Friends list.

1. At the top of your main Outlook Express window you have an "Addresses" button. Click it.
2. A window called "Address Book" will appear. That window has a File menu at the top left. Click it, and click Export..Other Address Book.
3. A window called "CSV Export" will appear. It is asking you for a filename. This is the file that Outlook Express will save your address book too. Click <Browse> and choose a file to save your address book too. Then click <Next>.
4. Now you have a list of things that can be saved in the CSV file. Only check E-mail address. Make sure nothing else is checked. Then click <Finish>.
5. Now go to Spam Crusher. Click the <My Friends> button and click <Import>. Navigate to the new file you just created in Outlook Express and click <Open> or <Ok>.

Filters

Filters are the list of words, phrases, email addresses and domains that identify a spam and cause Spam Crusher block email.

Add, or Import words to the filter.

For example if you receive an email containing the domain "babeview.com" or an email containing "free cash" that email will be blocked because those words are in the filter.

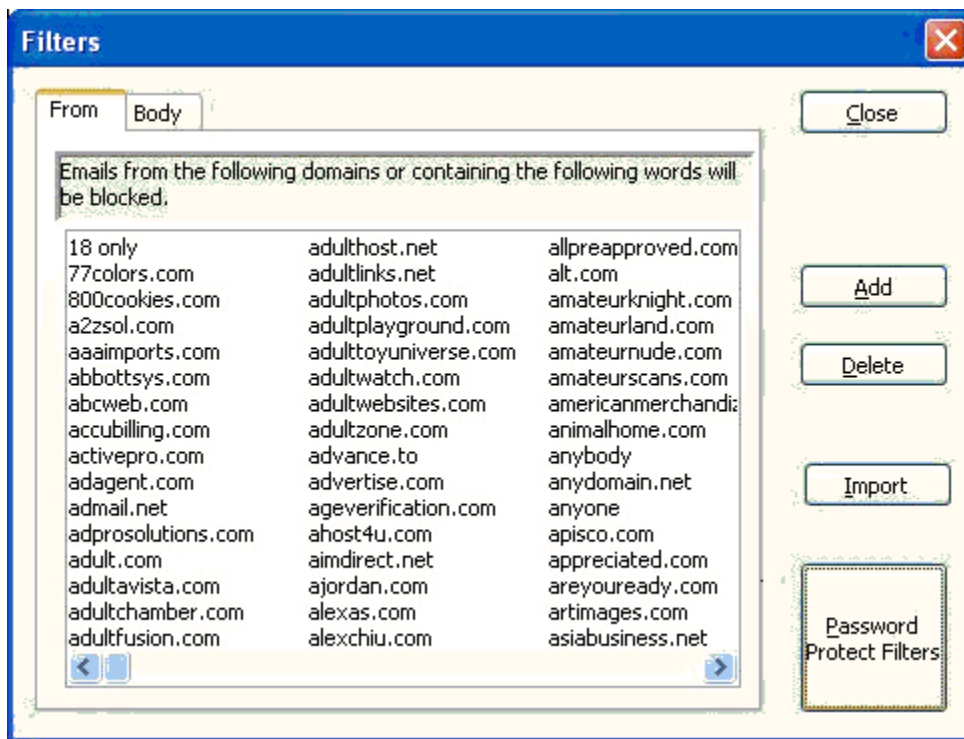
There are 2 types of filters. The From filter and the Body filter.

From filter - This filter scans the email addresses of the email you receive. If any of the words in the From filter is in an email address of an email, that email is blocked.

Body filter - This filter scans the subject and the body of the email you receive. If any of the words in the Body filter is in the subject or the body of an email, that email is blocked.

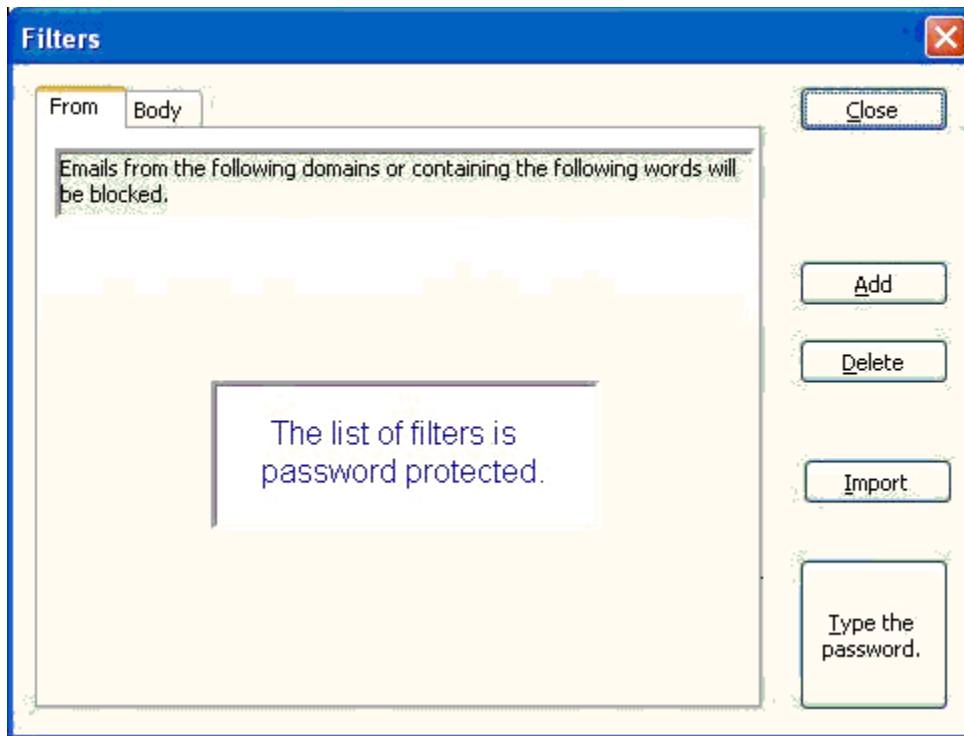
Note: Anyone in your Friends list that sends you email will not be filtered, no matter what.

To see the words that cause Spam Crusher to block email click the <Filters> button. You will see the following window.



You can password protect your filters. **If you have children, or other people that you want to hide the filters from, we suggest that you password protect your filters.** This will keep prying eyes from learning web sites to go see that they do not need to see.

Just click <Password Protect Filters> and provide a password that only you will know. And from then on, whenever anyone clicks the <Filters> button they will see this window.



If you want to see the filter words just click <Type the password> and type your password. The original window will appear and show you your filter words.

Add to the Filter

Filters are the list of words, phrases, email addresses and domains that identify a spam and cause Spam Crusher block email.

For example if you receive an email containing the domain "babeview.com" or an email containing "free cash" that email will be blocked because those words are in the filter.

You can add to the list of filter words in several ways.

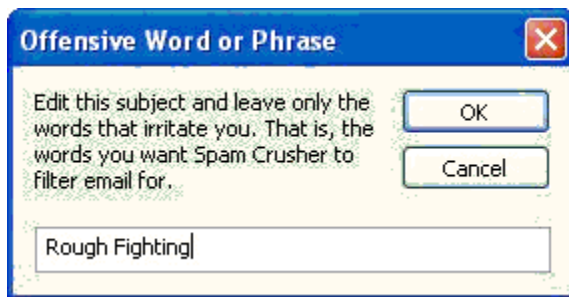
1. Click the <Filters> button on the main window. Notice the 2 tabs at the top, From and Body.

From filter - This filter scans the email addresses of the email you receive. If any of the words in the From filter is in an email address of an email, that email is blocked.

Body filter - This filter scans the subject and the body of the email you receive. If any of the words in the Body filter is in the subject or the body of an email, that email is blocked.

Note: Anyone in your Friends list that sends you email will not be filtered, no matter what.

Select the type of filter that you want to add too and click <Add>. You will see this window.

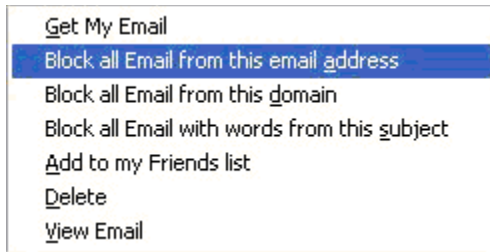


Type the words you want to add to the filter and click <Ok>. This will cause Spam Crusher to filter email containing those words in the future.

In this Filters window you can also Import keywords. Just select the From or Body filter and click Import. Spam Crusher expects a flat text file and will assume that one word, or phrase is on a line by itself. For example, here is what a file that you can import would look like

```
fast cash
fashcash.com
Make Money Now
Hot Babes
Never work again
Never-work-again.com
```

2. In the Inbox, right click on an email that should be spam and you will see the following menu.



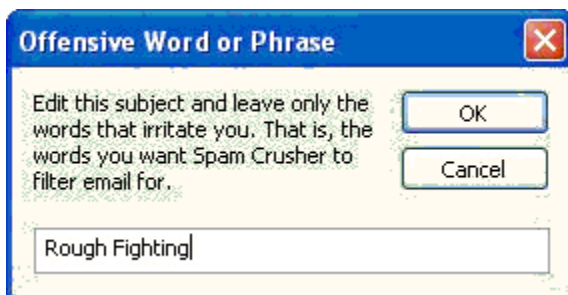
Block all Email from this email address - Many times you'll notice that the same email address will send you unwanted email over and over again. Select this option and any email from this email address will get filtered in the future.

Block all Email from this domain - Sometimes you'll notice that the same domain will send you unwanted email over and over again using different email addresses. For example, you could get 3 emails from the same person with different email addresses:

Buyme123@link2buy.com
ThisIsCool@link2buy.com
AsSeenOnTV@link2buy.com

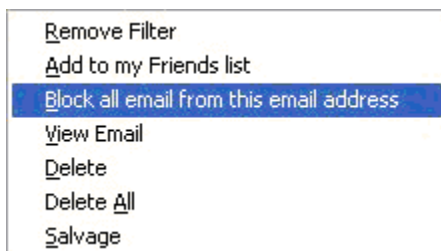
Select this option and any email from this domain will get filtered in the future. In the example, all email from link2buy.com would be filtered.

Block all Email with words from this subject - Let's say that you have an email in your Inbox that you know is spam because of a word or two in the subject. Click this option and the following window will appear.



Delete the words you are not offended by and keep the words you are. Then click <Ok>. Those words you selected (for example "Rough Fighting") will cause Spam Crusher to filter email containing those words in the subject or body in the future.

3. In the Trash Can you can right click on a spam and you will see the following menu.



Block all Email from this email address - Many times you'll notice that the same email address will send you unwanted email over and over again. Select this option and any email from this email address

will get filtered in the future.

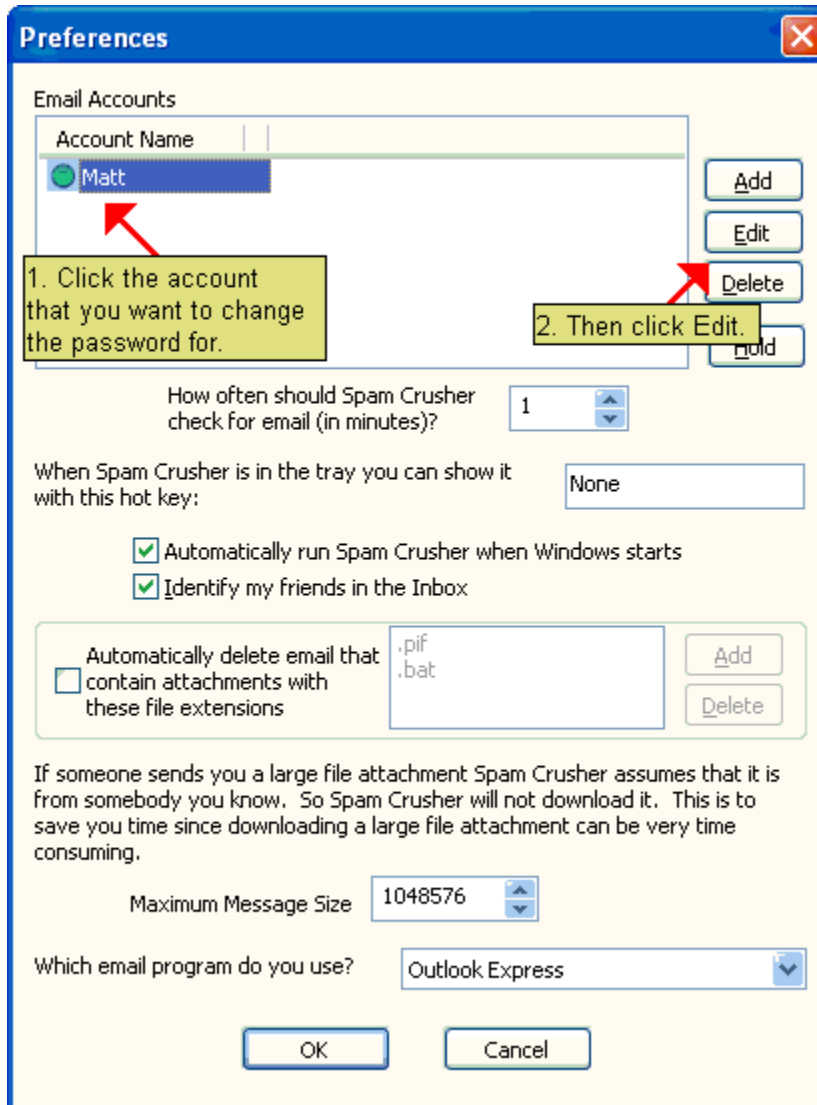
Remove Filter - Let's say that you receive an email with the word 'offer' in it. And you would like to receive emails with the word 'offer' in it. Just click <Remove Filter>, and the word 'offer' will no longer be in the filter list and you will be able to receive emails with the word 'offer' in them.

Note: Spam Crusher automatically checks for new filters on the American Systems site every 14 days.

Change my password

If you have changed your email password with your ISP then you MUST change it in Spam Crusher.

Click <Preferences> then at the top of the window click the account that you want to change the password for then click <Edit>.



Click on the password field and type your new password. This MUST be the same password that you use to retrieve your email with your ISP.

Email Account Settings ✕

What would you like to name this account?

Inbound Mail (POP3)

Email Server Port

User Id

Password

Email Address

Outbound Mail (SMTP) Type your password here

My outbound mail server is different than my inbound mail server

Email Server Port

When you send mail are you required to send a user id and password?

User Id

Password

Sounds

Play sounds

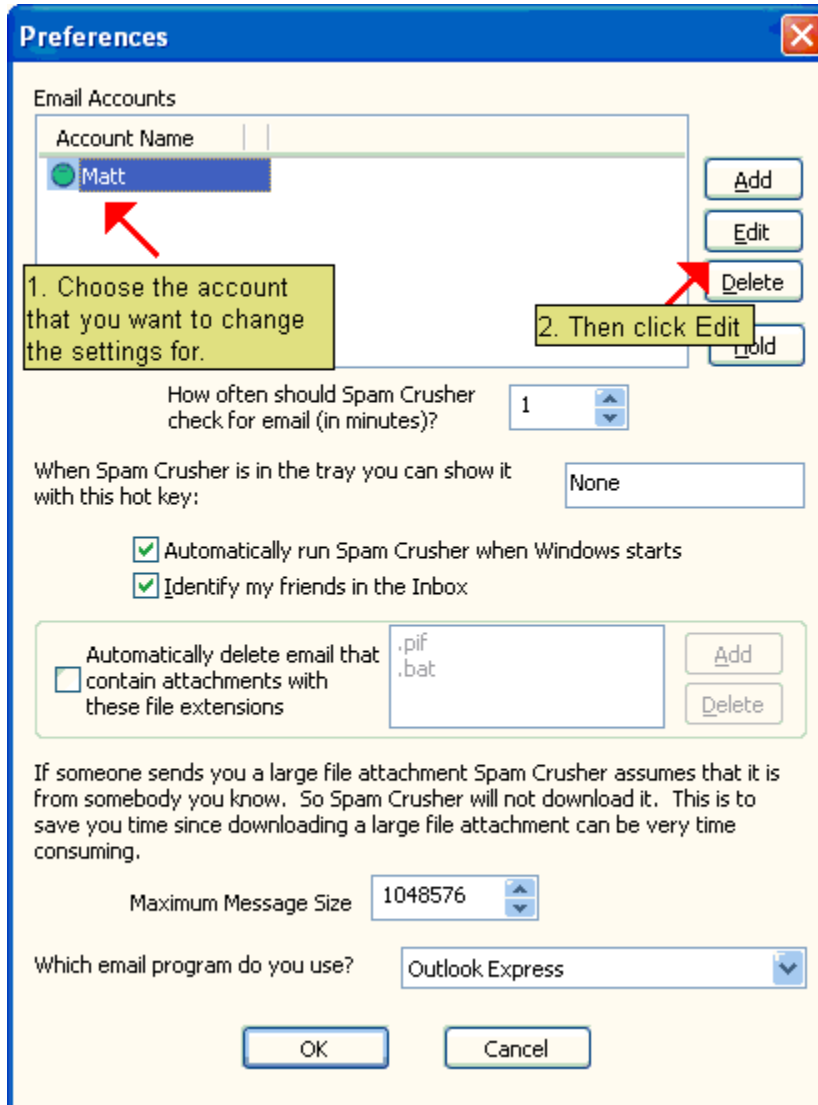
Spam Getting Crushed

You've Got Mail - That you want to read.

Change my Email server settings

If you need to change your email server settings, or you have changed ISPs you will need to follow these steps.

1. Click <Preferences> then at the top of the window click the account that you want to change the settings for then click <Edit>.



You will see a window with all of the settings for the account you selected. NOTE: Be sure you only change these settings if you know exactly what you are changing them too. If you enter the wrong information, Spam Crusher may not work properly.

You should be able to get this information from your email program. Most email programs have an Accounts window where you can select an account and change its settings.

We do not recommend that you change your port numbers unless you are specifically told to do so by your network administrator. These numbers are almost always 110 for POP3 and 25 for SMTP.

Sometimes ISPs want your email that you send to go through a different server than your email that you receive comes from. In this case check the **'My outbound mail server is different than my inbound mail server.'** This will enable you to enter different information for the outbound or SMTP mail server.

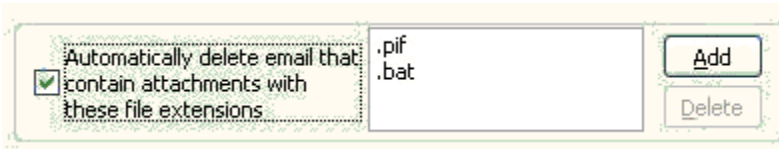
For this account you can also change the sounds that are played when good and bad email arrive.

Preferences

If you want to alter the way Spam Crusher behaves, click the <Preferences> button.

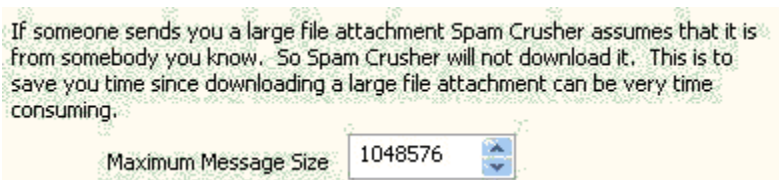
There are several things you can change.

1. Change your email account settings or password
2. Change how often Spam Crusher checks for email.
3. Change the hot key that displays Spam Crusher when it's in the tray (by your clock).
4. Tell Spam Crusher to only accept email from your friends. It assumes that you have email addresses listed in your Friends list.
5. Tell Spam Crusher to automatically delete email that contain file attachments with given file extensions. This feature is for those of you who receive a lot of viruses. Many times viruses come in a .PIF or .BAT file. Spam Crusher can simply delete them before your email program gets to them. Thus stopping the virus from getting to your PC. Good anti-virus programs will also intercept these files.



You can add file extensions yourself by clicking the <Add> button.

6. Set the maximum message size that Spam Crusher will download and examine. Many times if someone is sending you a large file attachment it is from a friend or coworker. Spam Crusher will not download large emails to save you time. This is very nice if you are on a 56K line (or slower). You can set the maximum size that you want Spam Crusher will download here.

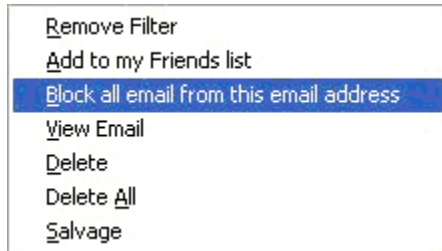


7. Change your default email program.

Sounds

Spam Crusher plays a happy "bweep" sound when you receive good email in your inbox. It plays a "buzzer" sound when you receive spam in your trash. This allows you to run Spam Crusher in the tray (click the X at the top right). When Spam Crusher is in the tray, it is out of the way and still working hard to eliminate spam for you.

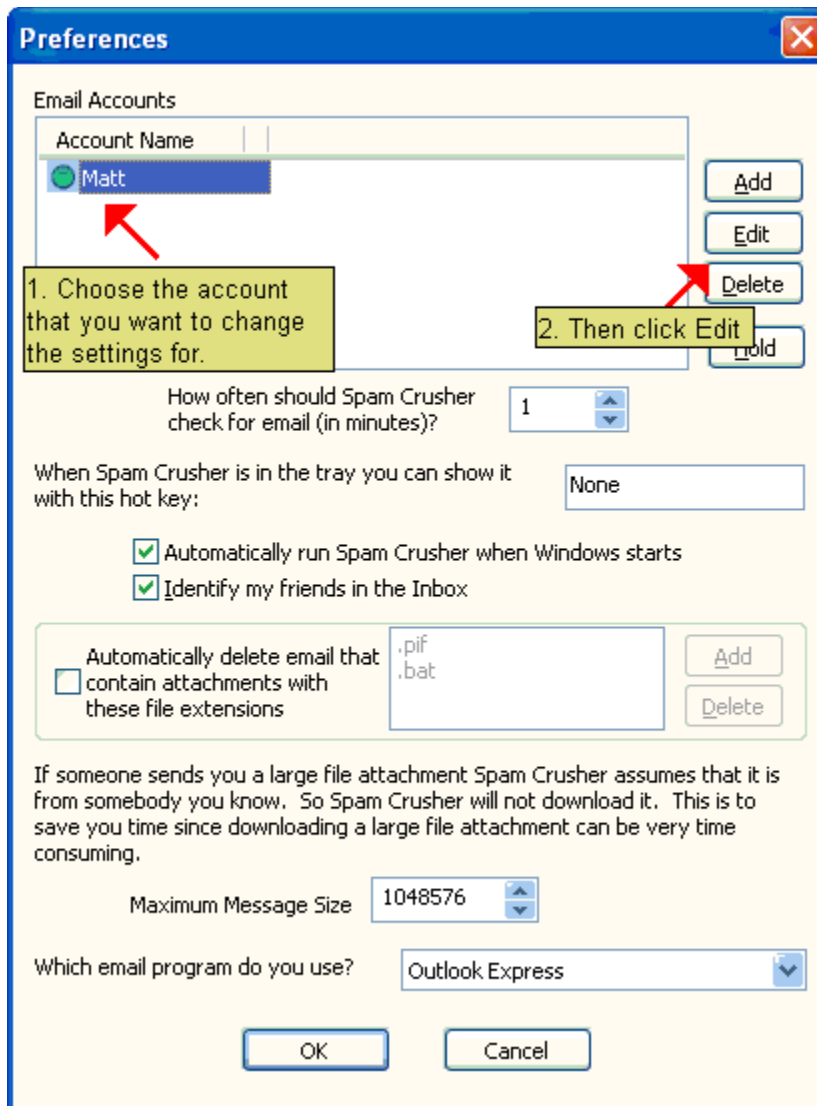
When you hear one of these sounds you can click the Spam Crusher icon in the tray to display the Spam Crusher window.



If you have more than one account that Spam Crusher scans you can set up different unique sounds for everyone. You can set up one set of sounds for Mike, one set of sounds for Carol, and one set of sounds for Kate, etc.

The way you do this is by going to their email account settings.

Click <Preferences> to see the list of accounts.



On the window that appears, go to the bottom and click <Browse> for and choose a new .WAV file to play.

Email Account Settings

What would you like to name this account?

Inbound Mail (POP3)

Email Server: Port:

User Id:

Password:

Outbound Mail (SMTP)

My outbound mail server is different than my inbound mail server

Email Server: Port:

When you send mail are you required to send a user id and password?

This is the sound that is played when spam is found.

To change sounds click <Browse>

Sounds

Play sounds

Spam Getting Crushed

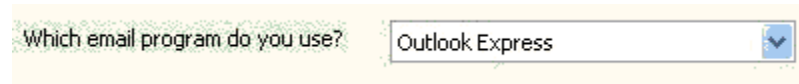
You've Got Mail - That you want to read.

This is the sound that is played when good email is found.

Change my default Email program

Some people have multiple email programs installed. When you click the <Get Your Email> button, Spam Crusher will launch the program listed here.

Click <Preferences> on the main window.



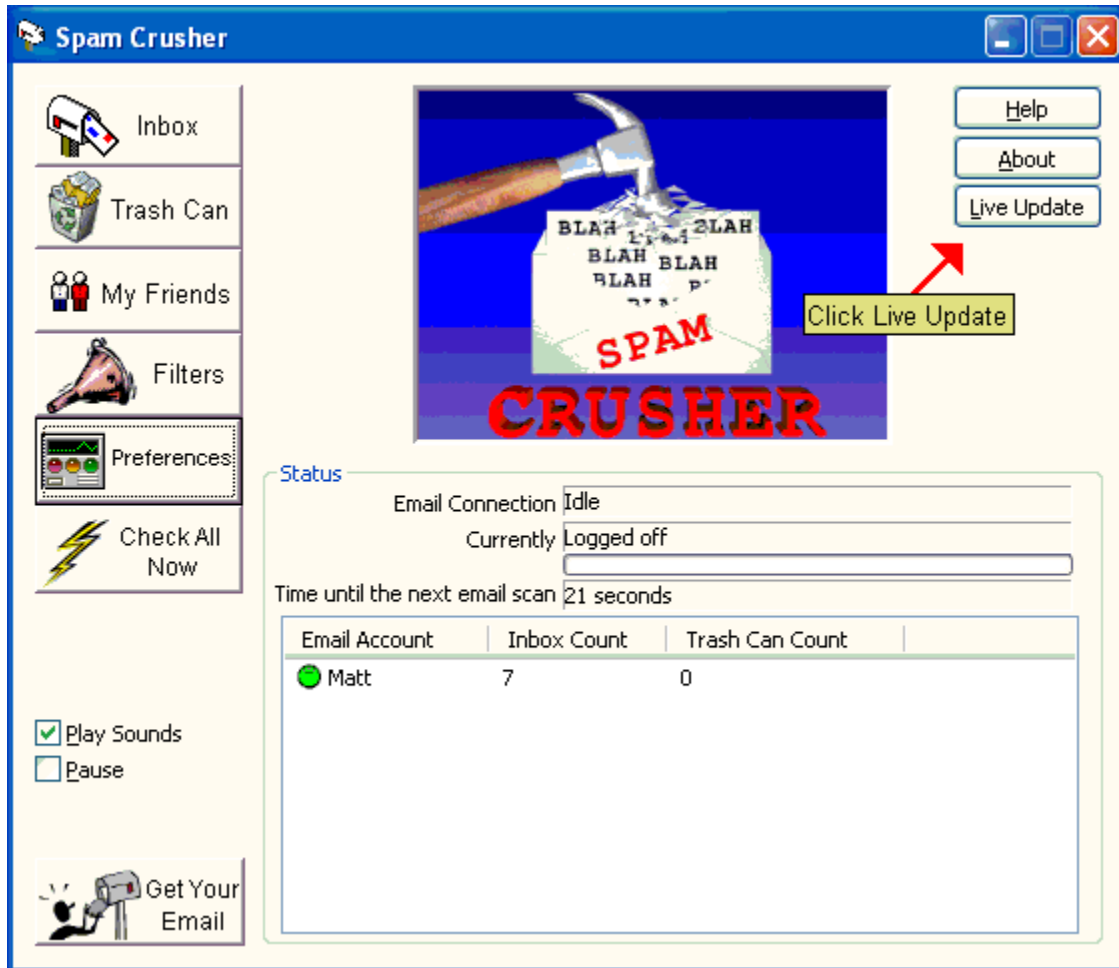
Which email program do you use? Outlook Express

The image shows a screenshot of a software preference dialog box. On the left, there is a text label 'Which email program do you use?'. To the right of this label is a dropdown menu. The dropdown menu is currently open, showing 'Outlook Express' as the selected option. The dropdown menu has a small blue arrow icon on its right side, indicating it can be clicked to show more options.

Just click the list and you'll see all the email programs listed. Just select the one you want Spam Crusher to launch when you click the <Get Your Email> button.

Live Update

To make sure you are always running the latest version of Spam Crusher click the <Live Update> button on the main window.



Follow the on screen instructions. Live Update will connect to the American Systems web site using your Internet connection and retrieve the latest upgrade and install it for you.

Spam Crusher 1.1a Order Form and Registration

To print this form, click on the 'File' menu, then click on the 'Print Topic' option.

Name _____

Company _____

Address _____

City _____ State _____ Zip _____

Phone (____) _____ - _____ Fax (____) _____ - _____ e-mail _____

Important: Is this your first product from American Systems? ()Yes ()No

_____ Number of Copies of Spam Crusher

x \$19.95 = \$ _____ (TEXAS residents add 8 1/4% sales tax.)

American Express (), Visa () or MasterCard () Number _____

Exp. Date _____

Signature: _____

Make checks and money orders payable to **American Systems.**

P.O.s for more than \$100.00 are welcome!

Bulk pricing is available!

Call us toll free at 1-888-892-4310

Mail, or Fax your check or credit card details to :

American Systems
5424 Rufe Snow #320
Fort Worth, TX 76180
Care of Windows Utilities Division
Fax:(817)485-2193

or **Order Online at <http://www.americansys.com> and get the software right away!**

Where did you get your evaluation copy from?

- () Internet
- () Vendor
- () BBS
- () CD-ROM
- () Friend
- () Other

Name of source _____

Note: Prices are effective February 1, 2003 and are subject to change. Please enclose any comments you have.

Contact Us

American Systems provides user support to registered versions via mail, and/or telephone.

American Systems will answer questions and resolve serious bugs for the first three months after registration. For problems involving a specific hardware or software environment or feature, we may choose not to modify the program. In that case, if a problem is reported within three months after purchase, then we shall offer to refund the user's purchase price.

If a bug prevents you from evaluating Spam Crusher during the first 30 days (prior to purchase), American Systems will attempt to assist but is not under obligation to resolve issues beyond our control.

Phone:

(817)485-6547

Fax:

(817)485-2193

Email:

Need Help with Spam Crusher? support@americansys.com

Do you have a question for sales? sales@americansys.com

Web:

<http://www.americansys.com>

Visit our online discussion group on our web site for further help with Spam

Crusher.

Address:

American Systems
5424 Rufe Snow #320
Fort Worth, TX, 76180

Please share the evaluation version of Spam Crusher with others for the purpose of evaluation as long as it is unaltered and distributed in its entirety.

Here are just some of Spam Crusher's features:

- Configure how often Spam Crusher checks for email
- Easily add new friends directly from the Trash Can
- Add new filters right from the Inbox
- Automatically start Spam Crusher when Windows starts
- Set a "hot key" to bring the program up
- Set a "Mail in" and "Spam filtered" sound for each account
- Turn sounds on and off by account
- Launch your email program to get your mail
- View your email right from the Spam Crusher Inbox
- Turn sounds off for ALL accounts (mute)
- View any email right from the Trash Can
- Set Spam Crusher to delete old SPAM every so many days
- Delete some or all filtered emails immediately
- Check ALL accounts now!
- Password protect the filters so children can't see them
- Have Spam Crusher delete emails with certain attachments, like .PIF, .BAT, and the like
- Salvage any email directly from the Trash Can
- Pause Spam Crusher operation
- Live Update to automatically get the latest version
- Filter update every 14 days, if desired

